



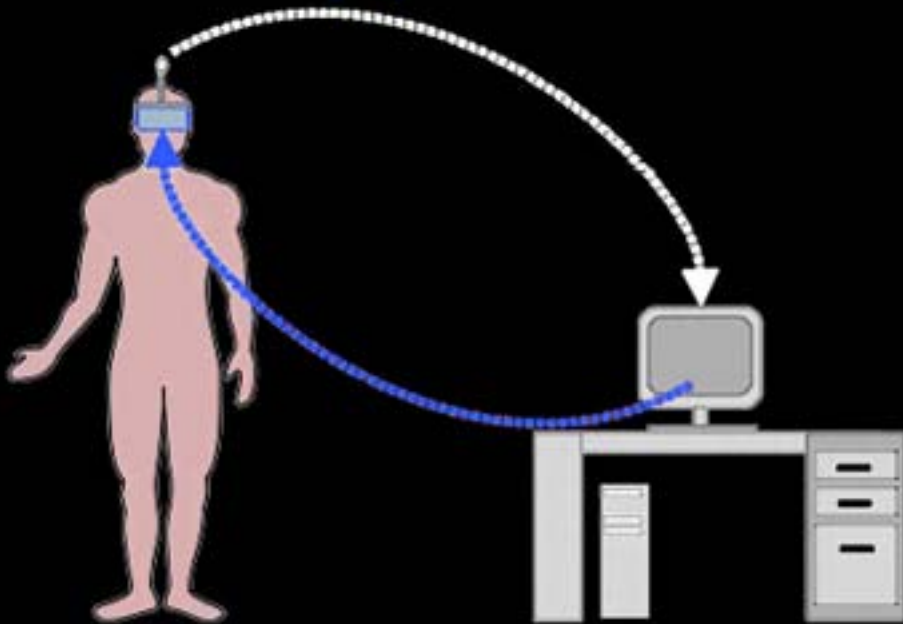
*Virtual Reality,
Transformed Social Interaction,
and
Digital Chameleons*

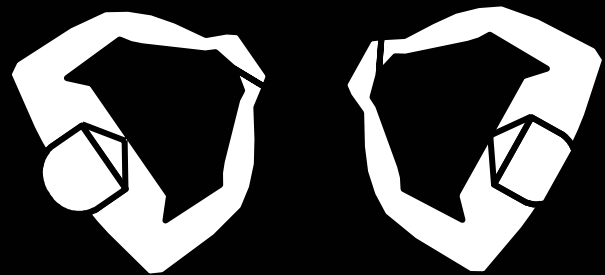
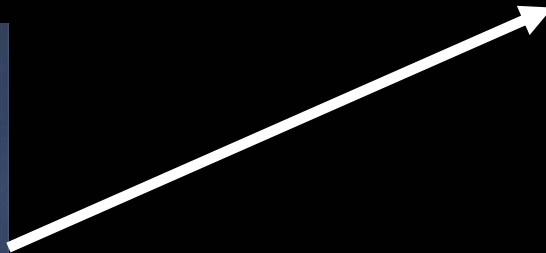
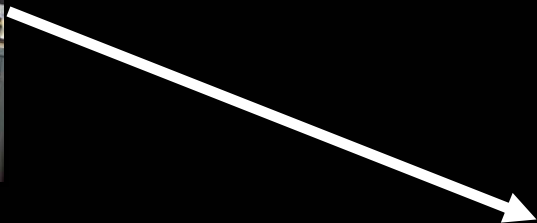
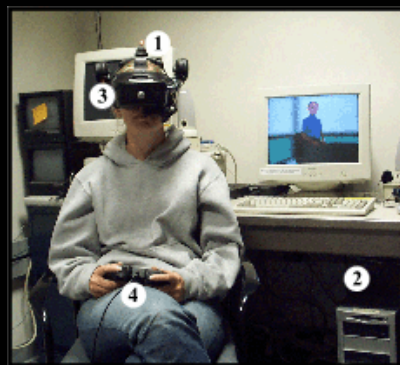
Jeremy Bailenson
Department of Communication
Stanford University

Virtual Human Interaction Lab
<http://vhil.stanford.edu>

Digital Immersive Virtual Environment Technology

Audio-Visual Display





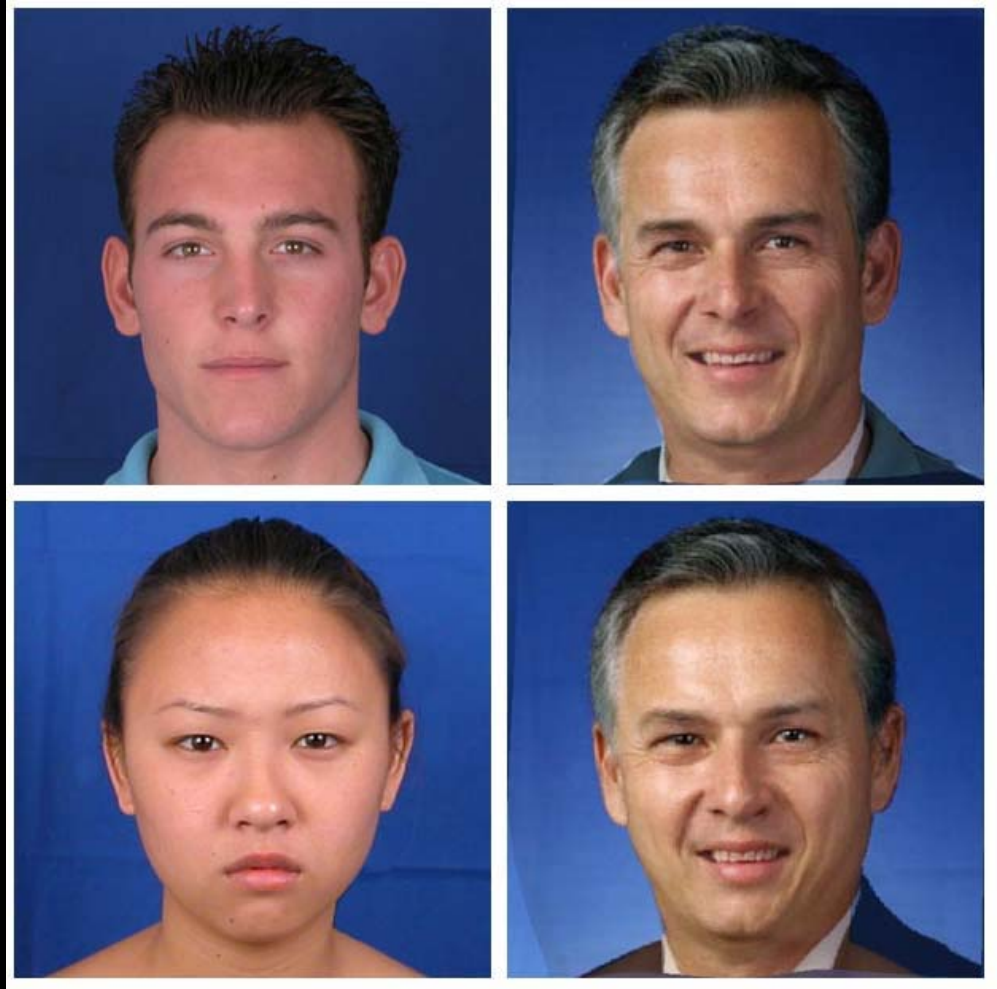
Transformed Social Interaction (TSI)



TSI: Digital Chameleons



TSI: Digital Chameleons



TSI: Team Face



TSI: Nonverbal Chameleon



TSI: Multilateral Perspectives



TSI: The Virtual Mirror



THE VIRTUAL MIRROR

TSI Applications

- Collaboration/Communication systems
- Training systems (i.e. Diversity)
- Distance Education
- Sales

Not Just VR...

- Cell phone digital reconstruction
- Online gaming
- Eye in the sky



Thank you!

Virtual Human Interaction Lab
<http://vhil.stanford.edu>